

## Supracare Suprapubic Puncture Set Silicone Balloon Catheter<sub>1</sub>

Suprapubic puncture set with balloon catheter<sub>1</sub>.  
The set consists of a silicone balloon catheter<sub>1</sub>, a split trocar and a MiroValve® autom. catheter valve.

### Silicone balloon catheter

- best patient acceptance
- reduced encrustation
- transparent
- open tip with side holes

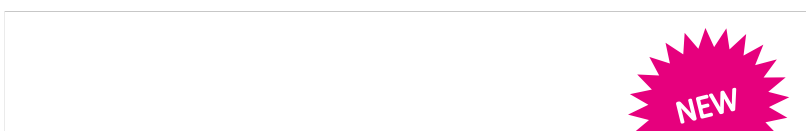
### Split trocar

- colour coded split trocar

### MiroValve® autom. catheter valve

- pressure resistant against non controlled urine flow
- compatibel to all common bag connectors
- automatically open once connected to the bag
- enhanced patient comfort

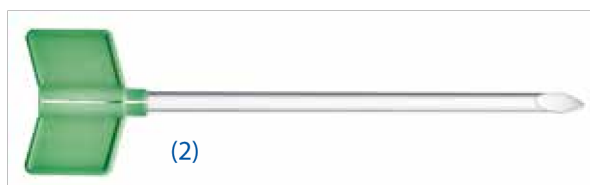
1 integrated balloon type.



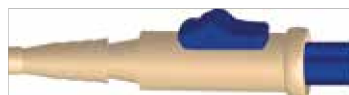
## Supracare Puncture Set



(1)



(2)



(3)

Silicone Balloon Catheter (1), Split Trocar (2), MiroValve®

### Supracare Technical Data

Length	40 cm
Diameter	12–16 FR
Balloon Capacity	5 ml (FR12+14), 10ml
Box	5 pcs.

### Sizes

### Product code

Sizes	Product code
Split Trocar Length 12 cm	
Split Trocar-ø 5,6 mm	08980512
Catheter 12 FR	
Split Trocar Length 12 cm	
Split Trocar-ø 5,6 mm	08980514
Catheter 14 FR	
Split Trocar Length 15 cm	
Split Trocar-ø 6,3 mm	08980516
Catheter 16 FR	

## MiroValve® AUTOM. CATHETER VALVE FOR UROLOGY

### MiroValve® technical data

product code 089805

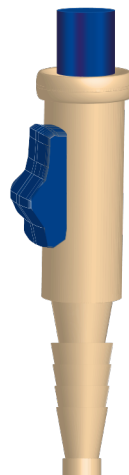
box 10 pcs

- ✓ can't forget to open or close the valve
- ✓ automatically open once connected to the bag
- ✓ the valve closes automatically when bag is removed
- ✓ easy operation with one hand
- ✓ no dripping of urine
- ✓ applicable with all common catheters and bags
- ✓ permanent automatic indwelling by connection to the bag
- ✓ good for bladder training
- ✓ easy spray disinfection
- ✓ coloured operating elements
- ✓ valve system will be changed together with catheter
- ✓ can be used for biliary drainage too

All products and packaging are latex and pvc free.  
A product video is provided here:  
<http://www.youtube.com/watch?v=A88emF907pE>



## MiroValve®



## MiroValve® Automatic Catheter Valve

# Urology Accessories